

Doggersbank Offshore 84'



KUIPERS



The Doggersbank Offshore 84' is a twin screw motor yacht, built in the northern Dutch lake district at Kuipers Shipyard in one of their climate controlled dry docks. Her steel hull with flared bow and aluminium superstructure are clearly showing the sturdy lines of this 120 ton motor yacht.



Two 300 HP engines provide a sustained speed of 12 knots, the fuel capacity gives her a triple trans Atlantic range at the average speed of approx 10 knots.



The owner of the Doggersbank Offshore 84' m/y BEOTHUK selected a contemporary interior with an elegant atmosphere, custom built out of blond teak in combination with high quality fabrics.

The wheelhouse is equipped with a custom made navigation, alarm and monitoring system. There is a large professional chart table and a day head. An electrically operated helmsman chair and settee with leather cushions provides comfort during extensive cruising.



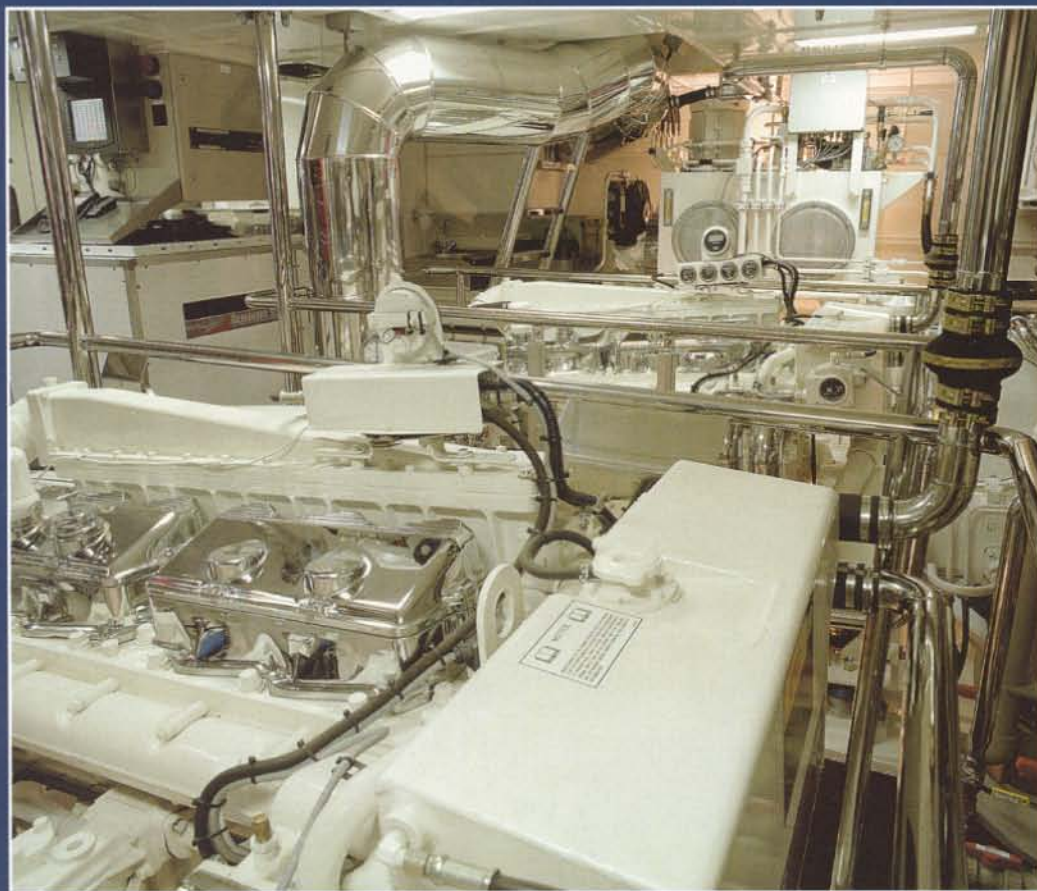


On lower deck level you find a full beam owners state room with a walk in wardrobe and a bathroom with marble floors and floor heating.

Each guest cabin has its own bathroom with marble floors and floor heating.



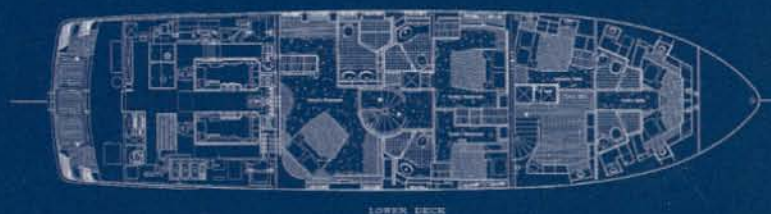
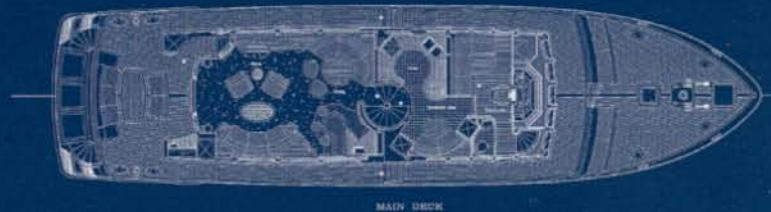
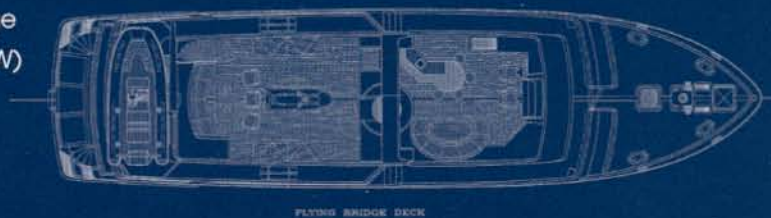
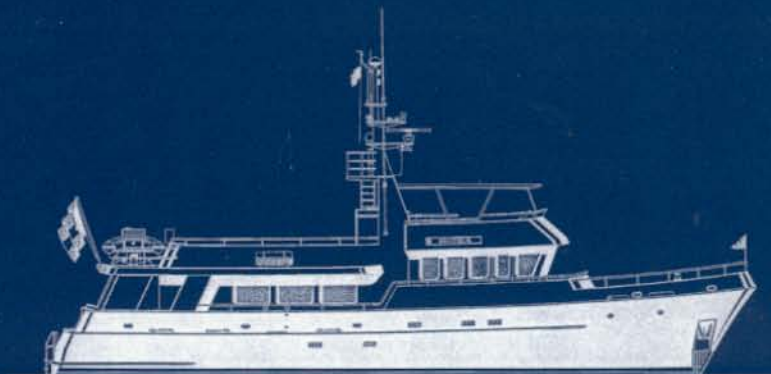
The galley on main deck level is fully equipped with professional household appliances. The countertop is made of granite and provided with backsplashes and a handrail.



The spacious Doggersbank Offshore 84' engine room clearly shows the high quality craftsmanship of Kuipers Shipyard. All equipment is first fitted in and then temporary removed in order to allow the painter to do his job perfectly, also at the not visible places. The drawings of the electrical wiring are designed by the engineers of Kuipers Shipyard and installed by the electricians of Kuipers Shipyard. Special attention is paid to the lay out of the engine room in order to provide easy maintenance. Also access to equipment and valves is eminent.

Specification of the Kuipers built Doggersbank Offshore 84':

Length over all	25.5 meter (83' 8")
Length water line	23.4 meter (76' 9")
Beam over all	6.73 meter (22' 1")
Draught	1.90 meter (6' 3")
Displacement	120 tons (264.480 lbs)
Hull material	Steel
Superstructure	Aluminium
Classification	✠ 100A1 SSC Yacht Mono G6
Engines	2 x Caterpillar 3406C DI-TA
Max speed	12 knots
Fuel Capacity	30,500 litres, 3 x Trans Atlantic Range
Generators	2 x Northern Light (35 kW and 16 kW)
Bowthruster	Hydraulic 35 kW,
Water maker	3400 litres per day
Interior joinery	Blond teak
Upholstery	Custom
Monitoring systems	Custom
Navigation systems	Custom
Shore power converter	35 kW
Naval architect	Vripack Yachting International Naval Architects BV, Sneek
Builder	Kuipers Shipyard, Woudsend



For more information please contact



Kuipers Shipyard

Vosselaan 43, 8551 PZ Woudsend, Holland
Tel (+31)-514-591 443. Fax (+31)-514-596 454
E-mail: info@kuiperswoudsend.nl